

# FARRAN SCHOOL EXPANSION 2014

18<sup>TH</sup> MARCH 2014



# THE OPPORTUNITY

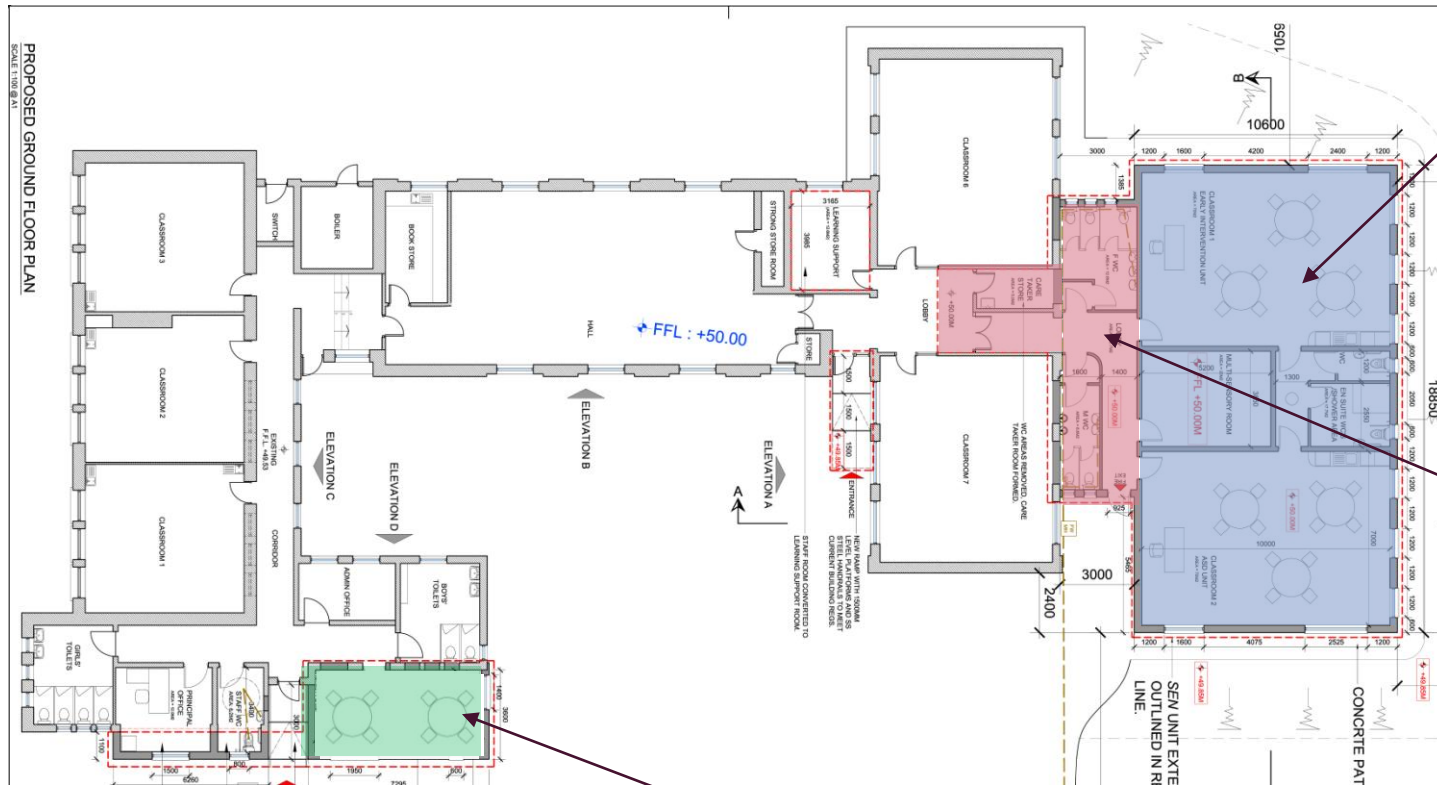
- In 2013, the school was approached to establish a new Special Needs Unit in the school for children within the autistic spectrum
- The Department of Education & Skills will **provide sufficient funding to build a stand-alone unit** consisting of two small classrooms, a toilet/shower room and a sensory room
- As the school is one of the few remaining cornerstones of the Farran community, this provides us with the **perfect opportunity to expand the school for future generations**
- Pig-backing on the Special Needs Unit build, the expansion will include:
  - **Increasing the size** of the two Special Needs Unit classrooms to 70sqm (comparable to 3<sup>rd</sup>-6<sup>th</sup> classroom size)
  - Creation of a **mainstream Learning Support Classroom**
  - Building of a new **toilet block for the senior school** (existing toilets need urgent upgrading)
  - Building of a **connection from the Special Needs Unit to the mainstream school** to enable better integration

# PHASED BUILDING SCHEDULE



- There are three distinct aspects to the build
  1. **Special needs (autism) unit** – two large classrooms, a sensory room, toilet /shower room
  2. **Learning support classroom** for the mainstream school
  3. **New toilet block for senior school** and **joining corridor** between mainstream school and Special Needs unit
- Depending on the amount of money available from the fundraising, these sections can be either built concurrently or independently but there are distinct savings to be made if the works are conducted in parallel

# BUILDING PLAN



Section 1 – Special Needs Unit – two large classrooms, a sensory room, toilet /shower room (blue)

Section 3 - New toilet block for senior school and joining corridor between mainstream school and special needs unit (red)

Section 2 - Learning support classroom for the mainstream school (green)

# EXPANSION WORK TIMEFRAME

- **Feb '14** Planning application submitted
- **April '14** County Council will come back with an indication if planning will be granted or if they will require further information
- **April – May '14** Any local objections to the planning application will be heard
- **May '14** Planning application will hopefully be granted
- **Mid May '14** Etendering process to appoint building contractor
- **End June '14** Building will start
- The duration on the build will not be known until after the etendering process, however it is estimated that Special Needs Unit could be completed by **January '15**



# FUNDRAISING TARGET - €100,000

- The school's Board of Management has worked tirelessly to **maximize funding** for the school
- Approximately **€100,000** in fundraising required
  1. **Local door to door collection** - there are approximately 500 houses in the school catchment area – if each house donated €200 this would cover the expansion project
  2. There will also be a door-to-door collection in the **wider catchment area** (Ovens / Ballincollig)
  3. A number of **special events** will also be ran over the next 12 months to make up any shortfall

